

**Show Special**  
**SAVE \$16,900**  
**Now \$189,900.00**



Beech 1728 sq ft  
Three Bedroom Ranch

Welcome to *Summerfield Woods Subdivision*. This community caters to the empty nesters and retirees. For only \$89 per month the lawn service, snow removal and garbage collection are maintained.

*We are better than a condominium. Ask us why.*

Our Home Show Tour Model for 2010 as you see it here at 6897 Lexington Place, lot 85 in Summerfield Woods, can be yours for \$189,900.00\*. The revised Beech floor plan is 1728 square feet of living space with the kitchen dinette opening into the great room, 3 bedrooms, including a master with a walk-in closet, 2 baths, sun room, laundry and a two car garage. Some of its extra features are a fireplace, vaulted ceilings, ten foot ceilings in foyer, ceramic tile in the foyer and bath, granite kitchen countertops and a full basement. Buy now and move in October 2010.

Visit us on the web at: [www.build.chbldrs.com](http://www.build.chbldrs.com)

**Save Today with the 2010**  
**Parade of Homes SALE**  
**\$189,900.00**

The Price of this Beech floor plan built on any lot in Summerfield Woods  
(All Prices Good Thru 31 December 2010)

Duplicate price including lot built on a Crawl Space is only \$177,900.00\*

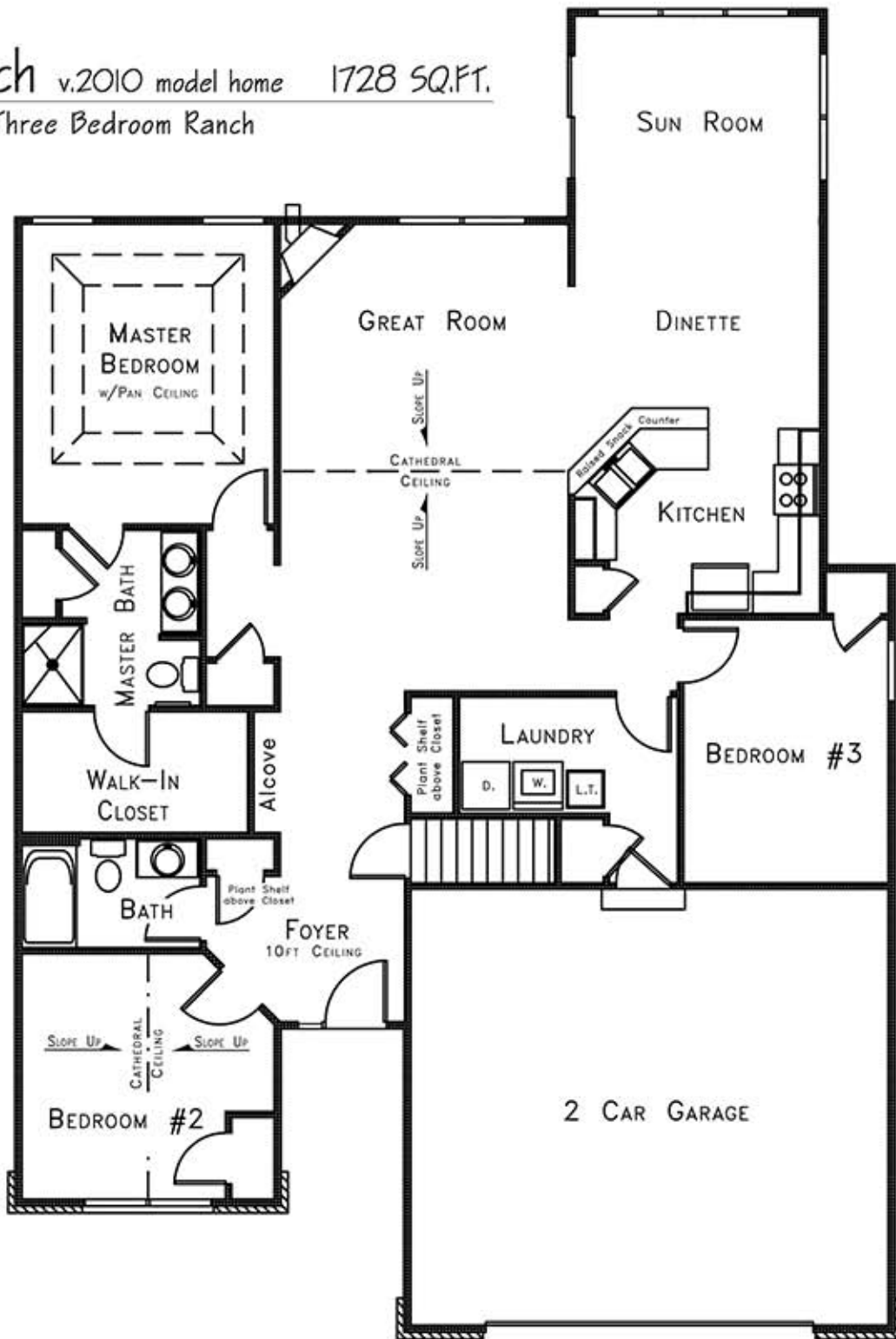
Duplicate price including lot built on a Basement is only \$189,900.00\*



7276 Jackman Road, Suite B  
Temperance, Michigan 48182  
734-847-1562 Fax: 734-847-6119  
[build.chbldrs.com](http://build.chbldrs.com) / [chb-sales@bex.net](mailto:chb-sales@bex.net)

*This rendering is for illustrative purposes only and some items may be optional.*  
\* Duplicate Price does not include home decorating (window treatments, furniture, etc.).

*Beech* v.2010 model home 1728 SQ.FT.  
Three Bedroom Ranch



7276 Jackman Road, Suite B  
Temperance, Michigan 48182  
734-847-1562 Fax: 734-847-6119  
build.chbldrs.com / chb-sales@bex.net

*This rendering is for illustrative purposes only and some items may be optional.*